
Mad Folk NEWS

Newsletter of the Madison Folk Music Society

Volume 30, No. 8 / August 2004

Folk at 4 performers turn up August's heat

On August 7, Madison's **Sara Pace** performs songs from her 2003 debut album, *Sara Pace: Self Titled*. This CD is a lyrical heavy-hitter within a modern Americana arena. Sara incorporates both fictional storytelling and poetic reckonings to include topics such as growing better (not older), politeness, and the carousel ride of love. Pace performs with guitarist Doug Milks and pedal steel guitarist Adam Davis.

Along with Pace, singer-songwriter, composer, multi-instrumentalist, and producer **Chris Rosser** will perform. Chris resides in the mountains of Ashville, North Carolina. He combines folk, pop and world music into songs about homecoming queens, ashrams, relationships, spirituality, and small-town churches.

The musical duo of **Mare Edstrom and Kenn Fox** perform on Saturday, August 14, on the Folk at 4 stage, located in Lisa Link Peace Park on State Street. Mare is a singer/songwriter and blues stylist with an expressive vocal range that works well when collaborating with Spiritone Records founder and producer, Kenn Fox. Kenn excels at the Tricone slide guitar and trademark finger style and electric sound.

Growing up devouring books about the old west, "**Catfish**" Stephenson's latest music endeavor is a greasy gumbo of Delta Blues, swampy serenades, Texas boogie, roadhouse rave-ups, lonesome cowboy laments, and the odd Parrothead Lullaby. Come listen to Catfish Stephenson's music—a heartfelt homage to all things musically American.

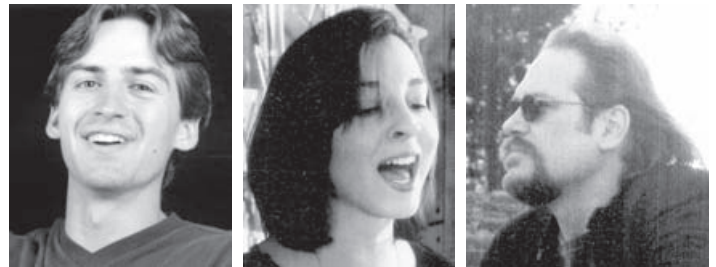
August 21 features Chicago's turbo-charged folk trio, **Sons of the Never Wrong**. The songwriting of Bruce Roper, the voice and onstage gyrations of Sue Demel, and the multi-instrumental talent of Deborah Lader combine into a simply magical musical experience.

A pleasantly twisted wordsmith who leaves no stylistic song unturned, Madison's **Ken Lonnquist** also takes the Folk at 4 stage at 4 p.m. on the 21st.

Folk at Four welcomes **Josh Calhoun** and **Tim Grimm** on Saturday, August 28. Josh is a performing songwriter from Wisconsin who writes music that speaks to people by pulling them in with meaningful lyrics and soulful melodies. Some reoccurring themes in his music are: hope, the family, childhood storytelling, the spiritual, and a look at the simple in a new way. Josh, a high school art teacher in Oshkosh, enjoys performing at concert series such as Folk at Four, outdoor festivals, and clubs/coffeehouses throughout Wisconsin.

Tim has firmly established himself as a unique voice in Folk-Americana music. Tim grew up in the rural and small-town setting of southern Indiana. After spending time in Los Angeles, Grimm returned to his roots and bought a farm not too far from where he grew up. His CDs, *Coyote's Dream* and *Heartland* contain songs inspired by the Indiana setting and neighbors.

You're guaranteed to enjoy a wide variety of music on August 28 with the talent of these fine artists.



August's Folk at 4 performers include (clockwise from top) Josh Calhoun, Mare Edstrom, Ken Fox, Sara Pace, Chris Rosser, and Ken Lonnquist. At right, Sons of the Never Wrong.



Shawano Folk Fest Aug. 13–15

The 26th annual Shawano Folk festival will be August 13–15 at Mielke Park. Workshops are held on four stages outdoors, with Friday and Saturday night concerts indoors. Jam sessions and open mics are held daily throughout the festival.

Performers include Peggy Seeger, One Drum, Fourtold (Michael Smith, Ann Hills, Cindy Mangsen, and Steve Gillette), Barton & Para, and more.

Visit www.shawanofestival.com for more information.

Great River kicks off Aug. 27

The Great River Folk Festival in La Crosse will feature Iris DeMent, Christine Lavin, Bill Miller, Peggy Seeger, and more. See enclosed flyer for more details on the Aug. 27–29 event.

Final Third-Friday Sing at Brittingham

The final Mad Folk summer sing will be held August 20 at the Brittingham Park shelter, located on the near west side of Madison off West Washington Avenue. The sings are


made possible by the Madison Parks Department, which has offered Mad Folk the use of the park shelter .

We plan to start singing about 7

p.m. and will go to about 10. All are welcome. We will be using the *Rise Up Singing* books.

For more info: Mike Tuten at 274-6340 or mnchu2101@charter.net.

SPRUCE TREE MUSIC & REPAIR INC.
 NEW + USED + VINTAGE
GUITARS MANDOLINS FIDDLES DULCIMERS
HARPS BANJOS UKULELES
BANJO-UKES RECORDERS TIN WHISTLES...
 + + +
QUALITY REPAIR & RESTORATION
 CDS - VIDEOS BOOKS - LESSONS
851 E. Johnson Madison WI 53703
608-255-2254
 + + +
 sprucetremusic.com



Mad Folk Board of Directors

Darlene Buhler, president.....846-9214
 dbuhler@charter.net
 Norbert Wodke, secretary.....836-8422
 nfwodke@chorus.net
 Chris Lipo, treasurer..... 833-3323
 lipo@yahoo.com
 Dede Goldberg.....246-4332
 drgoldbe@wisc.edu
 Ramona Johannes.....246-0436
 Steve Grohmann.....873-6777
 grohmann@terracom.net
 Bill Fiore.....256-4687
 fiore@charter.net
 Tracy Comer.....276-8192
 tracy@tracycomer.com

Committee contacts:

Concert: Darlene Buhler, 846-9214
Festival: Bill & Mary Fiore, 256-4687
 Perry Baird, Newsletter, 258-4386
 Dede Goldberg, Newsletter 246-4332
 Mary Schranz, Calendar, 273-2515
 Darlene Buhler, advertising, 846-9214
 Tracy Comer, membership, 276-8192
Mad Folk e-mail: Madfolk@charter.net
Mad Folk web site: www.madfolk.org

Meeting

Mad Folk Board: August 3, 6:30 p.m.
 at 813 Woods Glen Court

MADISON MUSIC CO.

Wisconsin's Premier Dealer of High-End Acoustic Guitars, Mandolins, & Banjos! In Business Since 1936!

Featuring...



<p>Banjos</p> <ul style="list-style-type: none"> • Huss & Dalton • Goodtime • Alvarez 	<p>Guitars</p> <ul style="list-style-type: none"> • Martin • Taylor • Santa Cruz • Froggy Bottom • Collings • Huss & Dalton • Paul Beard Resophonics
<p>Mandolins</p> <ul style="list-style-type: none"> • Collings • Rigel • Breedlove • Morgan Monroe 	

Sheet Music! Full line of accessories!
 Music Lessons! Full-service repair shop on site!

4253 W. Beltline Hwy. (Seminole Hwy. & The Beltline)
(608) 257-5877 www.madisonmusic.com

Madison Folk Music Society

P.O. Box 665, Madison, WI 53701

Address Service Requested

Newsletter Published Monthly

Membership Form: **Madison Folk Music Society**
 c/o Tracy Comer, P.O. Box 930446, Verona, WI 53593-0446
 Renewal New Member

Name _____

Address _____

City/State _____ Zip _____

Phone _____

E-mail _____

Membership Categories

Student \$10 _____
 Senior \$8 _____
 Regular \$12 _____
 Family \$15 _____
 Friend \$25 _____
 Contributing \$50 _____
 Life \$500 _____

Total \$ _____

Check One

I would like to help with:

- Newsletter
- Concerts
- Festival
- Housing performers
- Publicity
- Membership
- Transportation

Your contribution is tax-deductible and helps us defray the cost of event expenses. You may designate its use. Thank you.

Nonprofit Org.
 U.S. Postage
 PAID
 Madison, WI
 Permit No. 2278